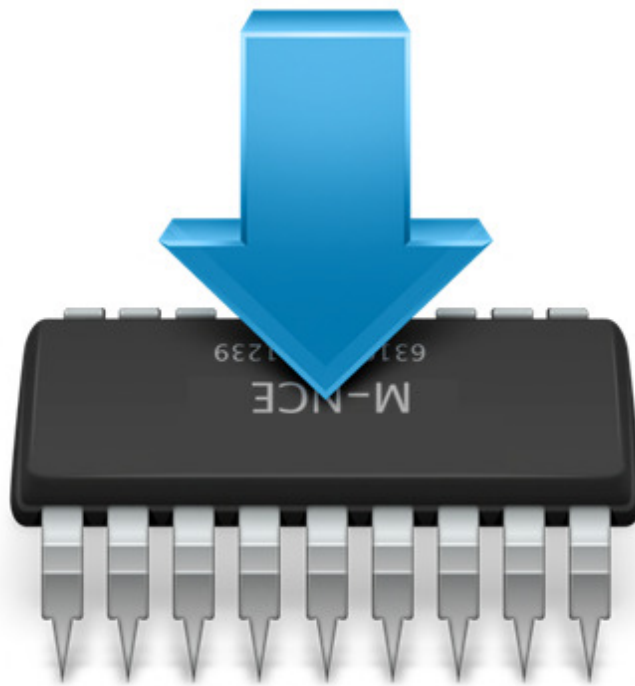


Firmware Update Procedure

*Airence / Airlite / GSM
Hybrid/Webstation/Airlab*



VERSION 4.10



D&R Electronica BV, Rijnkade 15B, 1382GS Weesp, The Netherlands
Phone: +31 (0)294-418014, Fax: +31 (0)294-416987, Website: <http://www.d-r.nl>, E-mail: info@d-r.nl

Contents

- INTRODUCTION 3**
- INSTALL FIRMWARE UPDATETOOL..... 3**
- UPDATE PROCEDURE AIRENCE / AIRLAB 6**
 - PREPARATION 6
 - ENTER BOOTLOADER MODE..... 6
 - INSTALL USB BOOTLOADER DRIVERS..... 6
 - FLASH FIRMWARE INTO DEVICE 9
- UPDATE PROCEDURE AIRLITE / WEBSTATION 10**
 - PREPARATION 10
 - ENTER BOOTLOADER MODE..... 10
 - INSTALL USB BOOTLOADER DRIVERS..... 10
 - FLASH FIRMWARE INTO DEVICE 13
- UPDATE PROCEDURE GSM HYBRID..... 14**
 - PREPARATION 14
 - ENTER BOOTLOADER MODE..... 14
 - INSTALL USB BOOTLOADER DRIVERS..... 14
 - FLASH FIRMWARE INTO DEVICE 17
- TROUBLESHOOTING..... 18**
 - ATLIBUSBDFU.DLL NOT FOUND 18
 - JAVA VIRTUAL MACHINE (JVM) 18
 - ERROR – FIRMWARE UPDATE FAILED!..... 18

Introduction

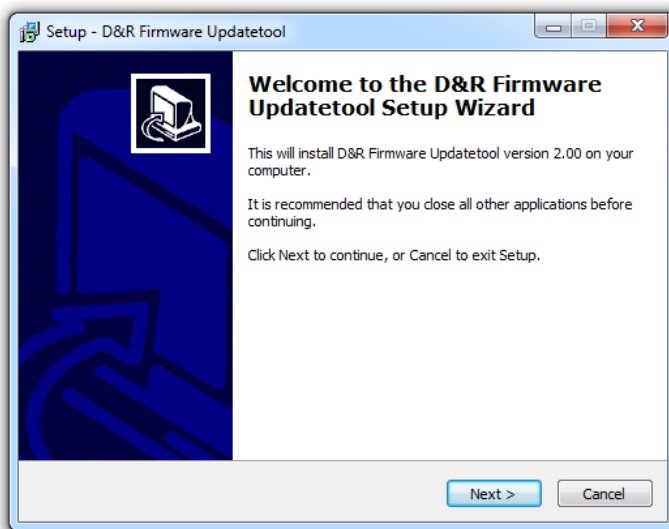
Every now and then new firmware versions will be released to provide the device with new features or solved bug fixes. In order to be able to update the current firmware the bootloader mode must be entered. A specific powering procedure in combination with pressing a button is required to enter bootloader mode (explained in next chapter in more detail). When powering up the mixer in an ordinary way it will enter the normal operation mode and is ready for use.

Install Firmware Updatetool

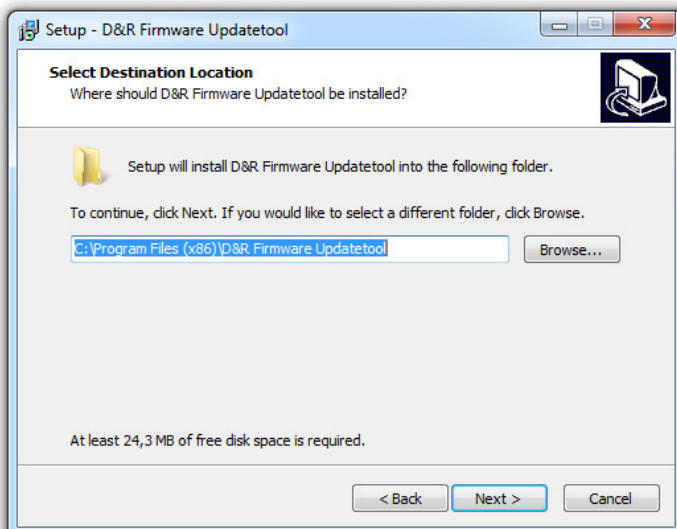
Firmware Updatetool is available which is required to perform the firmware update. You can download the installer from the D&R Wiki (<http://www.d-r.nl/wiki/dokuwiki/doku.php?id=software>)

Double click on the setup file. The welcome screen of the installer should appear.

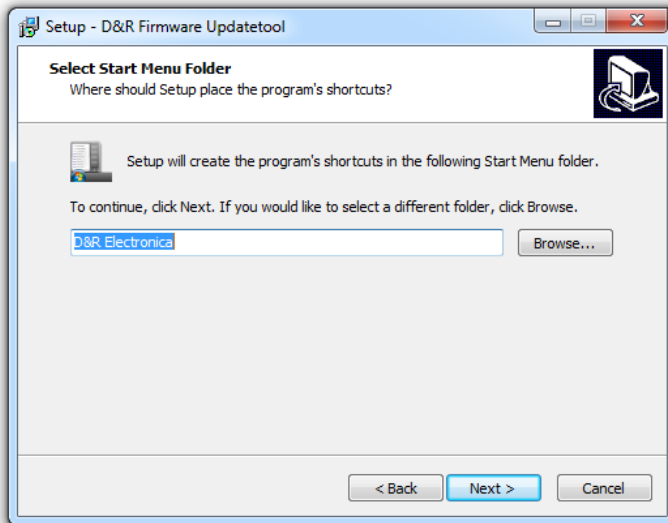
- Press *Next* to continue.



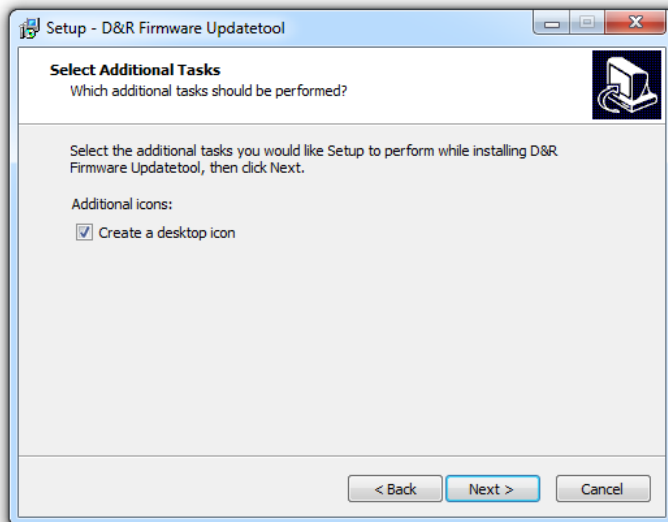
- Select a destination location for the update tool to be installed into and click *Next*.



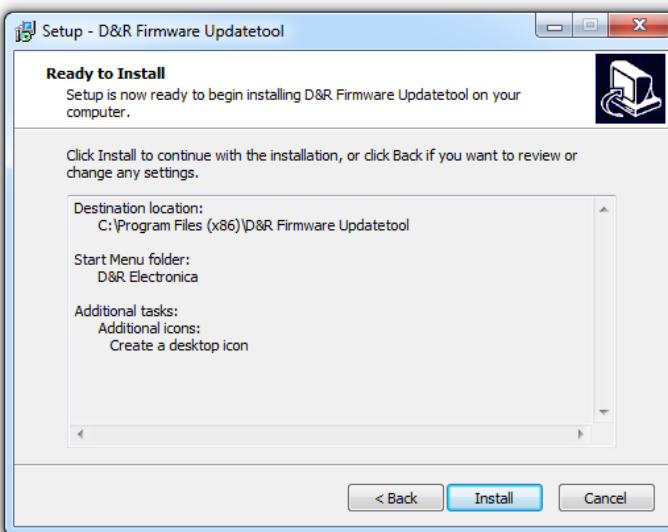
- Select a start menu folder and click *Next*.



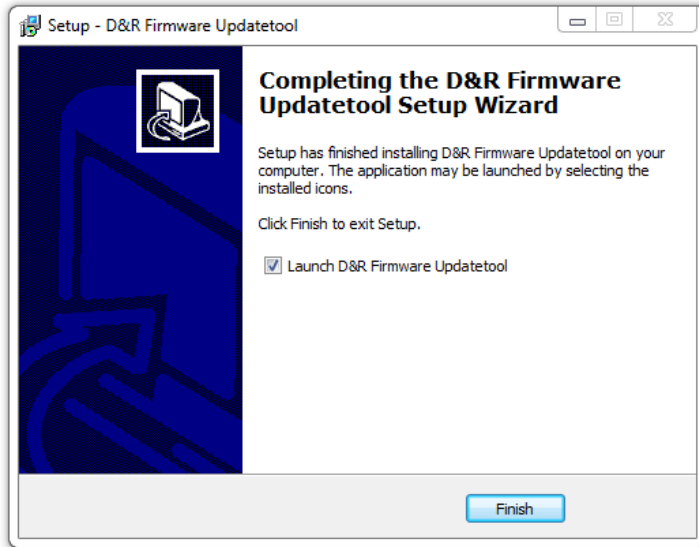
- Enable the 'Create a desktop icon' for a shortcut on the desktop and click *Next*.



- If you agree with the configuration click *Install* to begin installation.



- Setup copies files to the destination install folder. Click *Finish* to complete the installation.



Update Procedure Airence / Airlab

Preparation

Before you can start with the update procedure the following precautions must be taken:

- Connect a USB cable between the Airence and the PC
- Download and install Firmware Updatetool: <http://www.d-r.nl/wiki/dokuwiki/doku.php?id=software>
- Download the latest firmware: <http://www.d-r.nl/wiki/dokuwiki/doku.php?id=software>
- Startup the Airence in bootloader mode (see next chapter).

Enter Bootloader mode

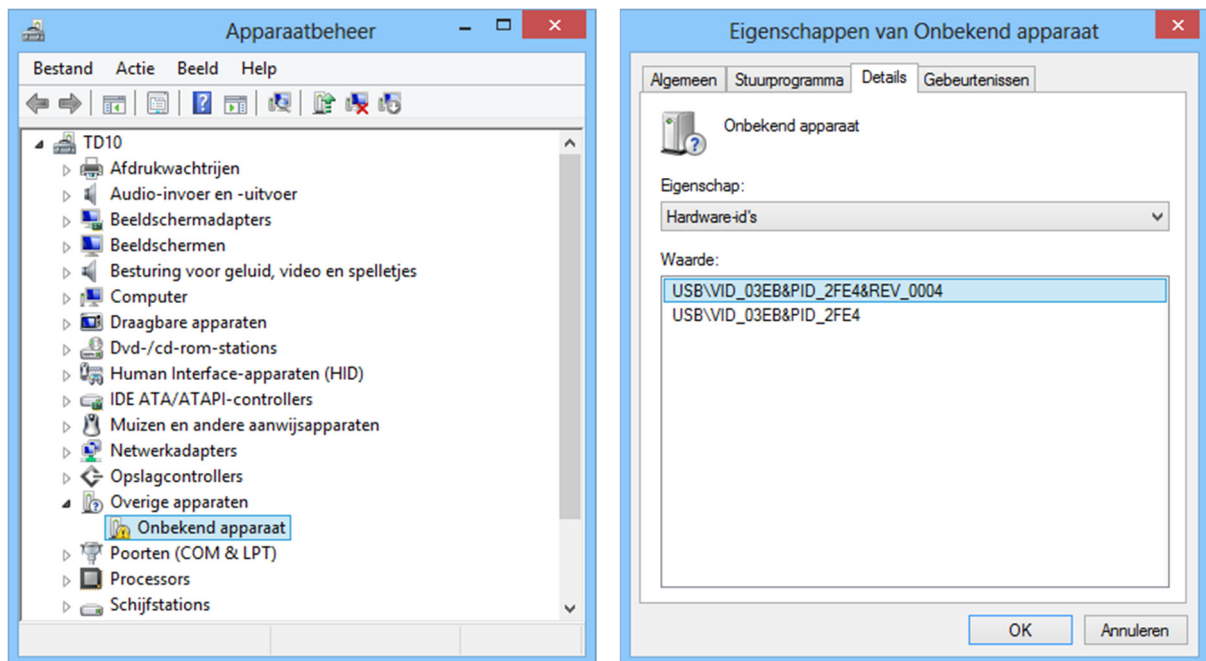
To enter the bootloader mode a special startup sequence should be followed:

- Disconnect power
- Push and hold down the rotary encoder switch (located on the control section)
- Connect power
- Release the encoder switch

Install USB bootloader drivers

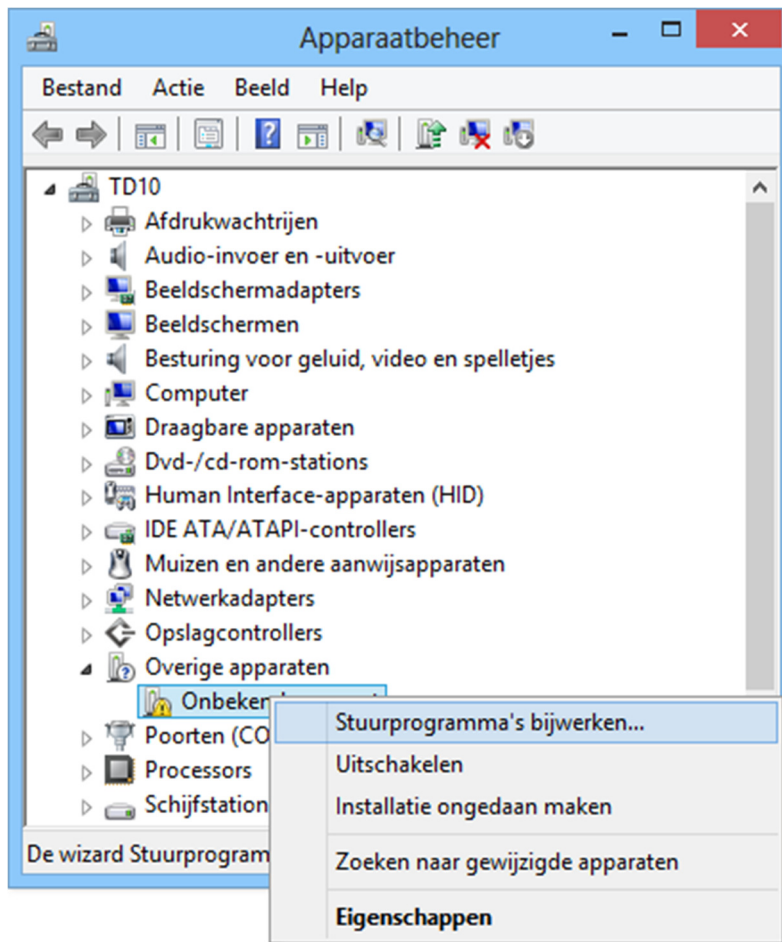
When the Airence enters the bootloader mode it will probably sign up as an 'unknown device' in the device manager from Windows. To determine if this unknown device is the Airence in bootloader mode, right-click on the device and select properties. On the *Details* tab select *Hardware-id's* from the properties selection box and verify the VID and PID of the device.

VID (Vendor ID): **03EB**
PID (Product ID): **2FE4**

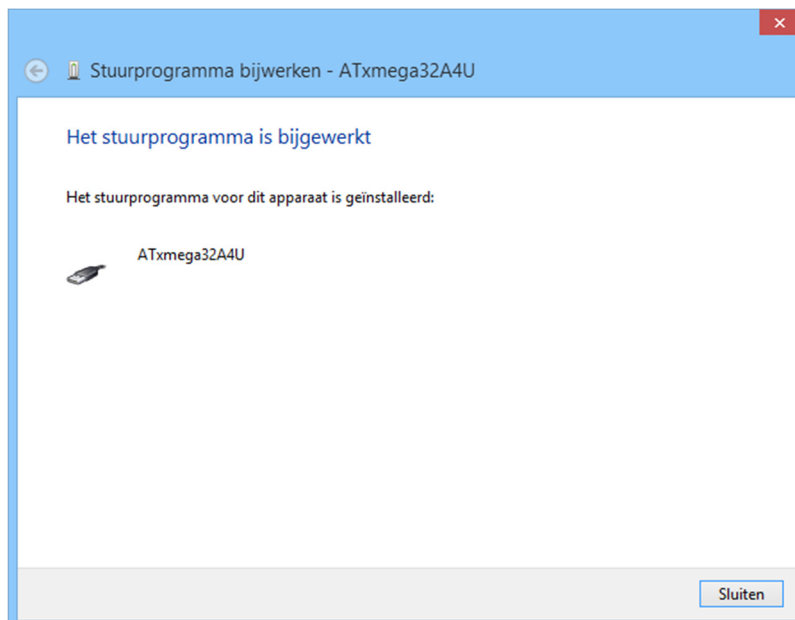


To install the drivers right-click on the device and select update drivers. The drivers can be found in a subdirectory 'usb' of the Firmware Updatetool installation folder. For example:

C:\Program Files (x86)\D&R Firmware Updatetool\usb

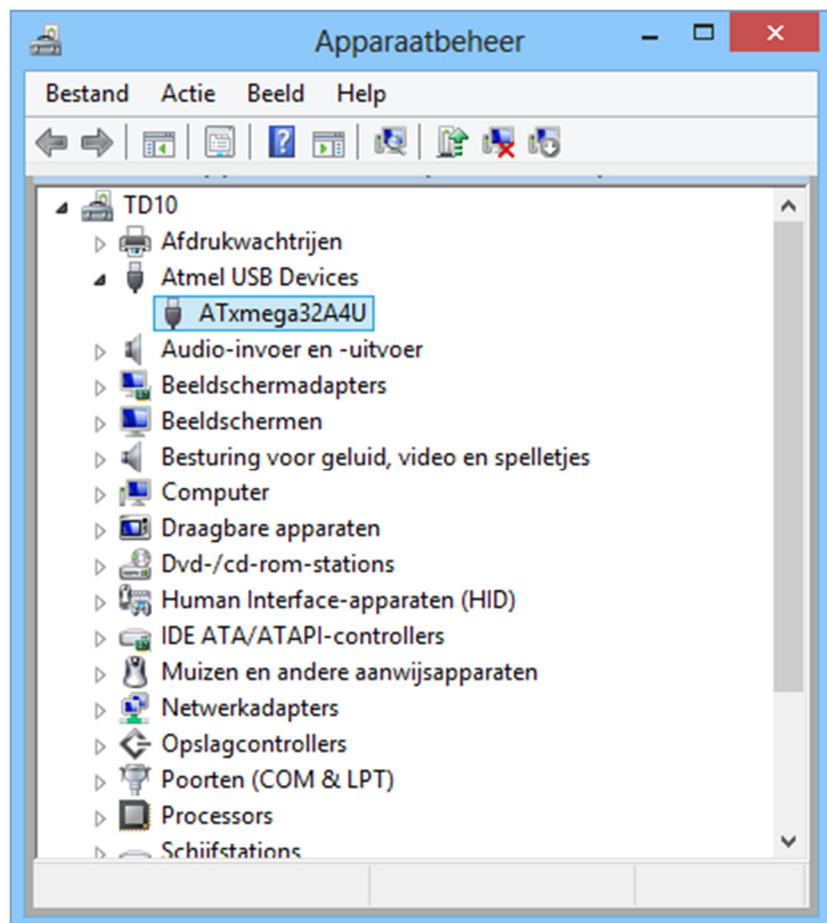


If the installation of the drivers was succesfully you should be able to see a screen similar like below:

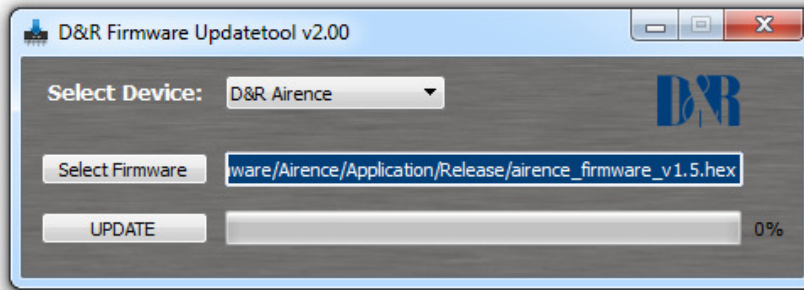


In the device manager the unknown device is correctly installed and now shown as :
Atmel USB Devices -> ATxmega32A4U

The ATxmega32A4U device indicates the Airence is in bootloader mode.

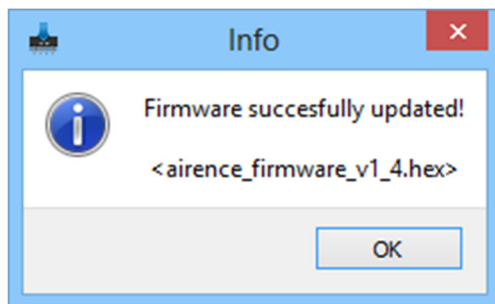


Flash firmware into device



- Startup the *D&R Firmware Updatetool* application.
- Select D&R Airence device from the drop down menu.
- Select the firmware file (*.hex).
- Press the UPDATE button.

The progress bar gives an indication of the status of the update procedure. When the update is successfully performed the Airence automatically leaves the bootloader mode and reboots with the new firmware in normal operation mode. The following message should appear:



Update Procedure Airlite / Webstation

Preparation

Before you can start with the update procedure the following precautions must be taken:

- Connect a USB cable between the Airlite/Webstation USB Main port and the PC
- Download and install Firmware Updatetool: <http://www.d-r.nl/wiki/dokuwiki/doku.php?id=software>
- Download the latest firmware: <http://www.d-r.nl/wiki/dokuwiki/doku.php?id=software>
- Startup the Airlite in bootloader mode (see next chapter).

Enter Bootloader mode

To enter the bootloader mode a special startup sequence should be followed:

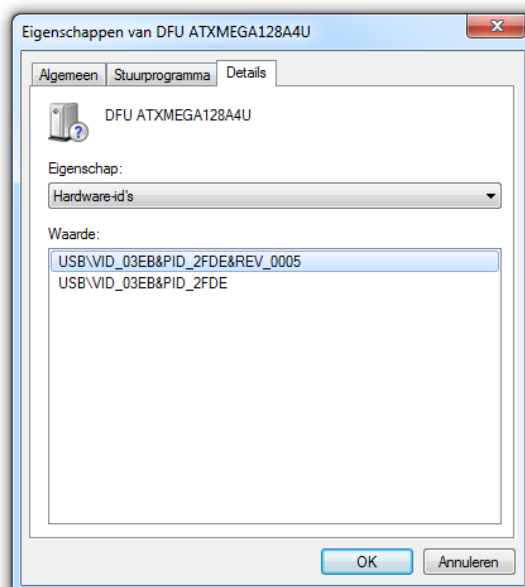
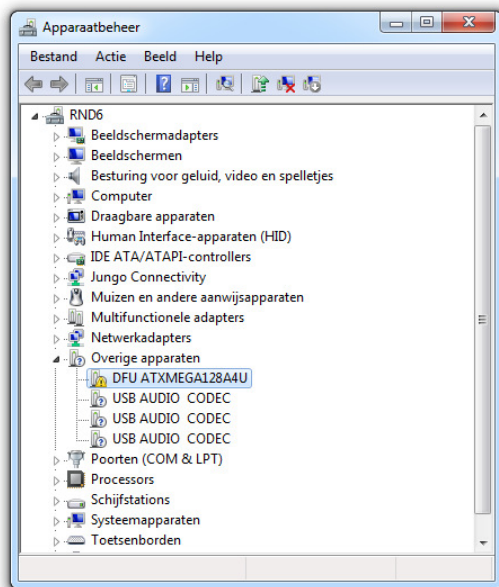
- Disconnect power
- Push and hold down the [CONN]-switch (Airlite ch.8, Webstation ch.6)
- Connect power
- Release the [CONN]-switch

Install USB bootloader drivers

When the Airlite enters the bootloader mode it will probably sign up as an 'unknown device' or 'DFU ATXMEGA128A4U' in the device manager from Windows (yellow exclamation mark). To determine if this unknown device is the Airlite in bootloader mode, right-click on the device and select properties. On the *Details* tab select *Hardware-id's* from the properties selection box and verify the VID and PID of the device.

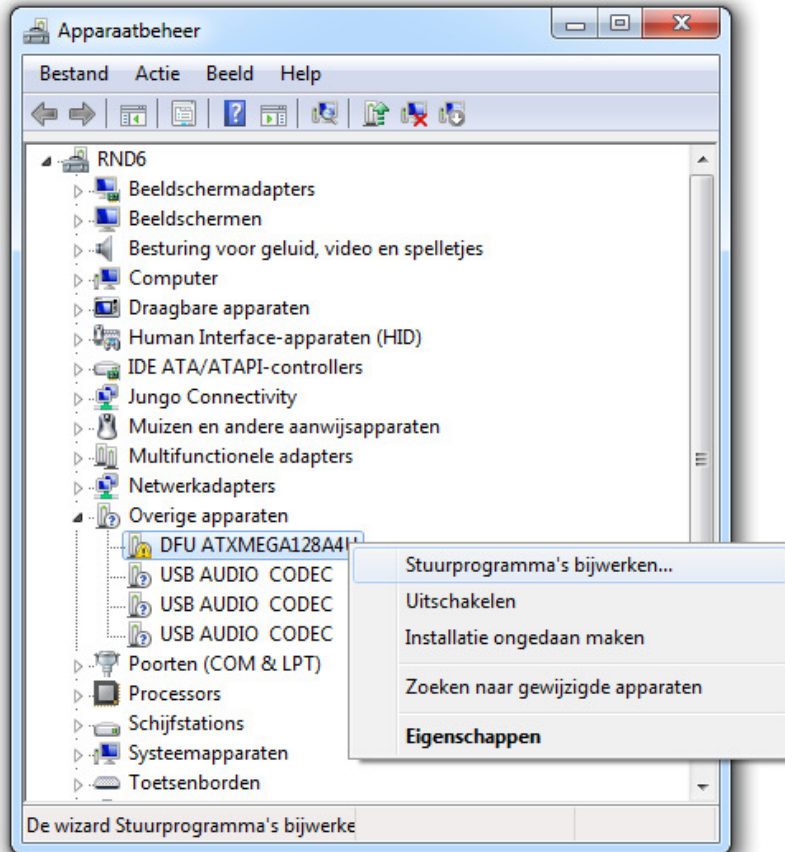
VID (Vendor ID): **03EB**

PID (Product ID): **2FE4**

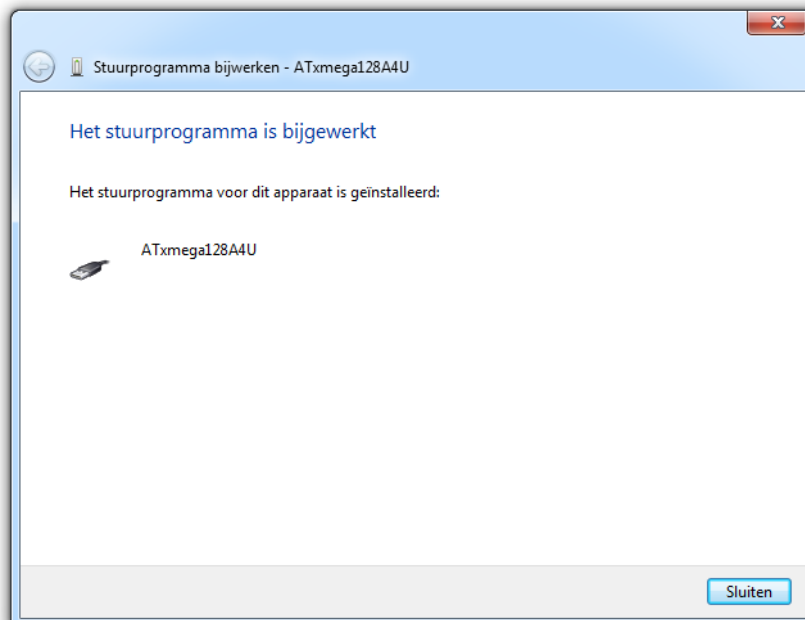


To install the drivers right-click on the device and select update drivers. The drivers can be found in a subdirectory 'usb' of the Firmware Updatetool installation folder. For example:

C:\Program Files (x86)\D&R Firmware Updatetool\usb

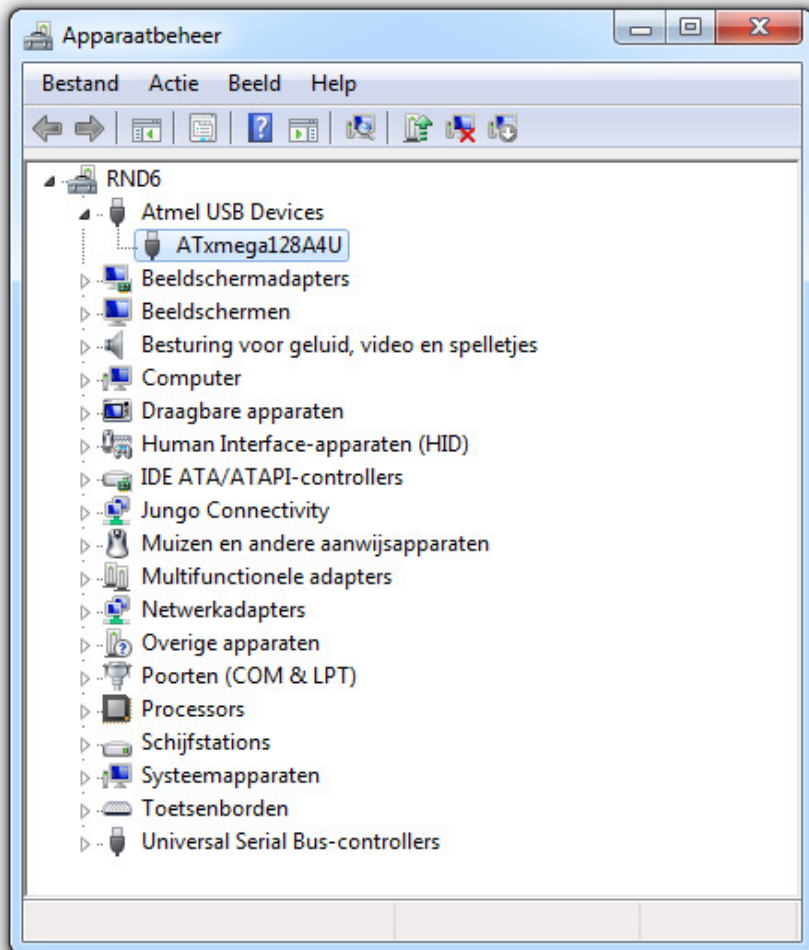


If the installation of the drivers was succesfully you should be able to see a screen similar like below:

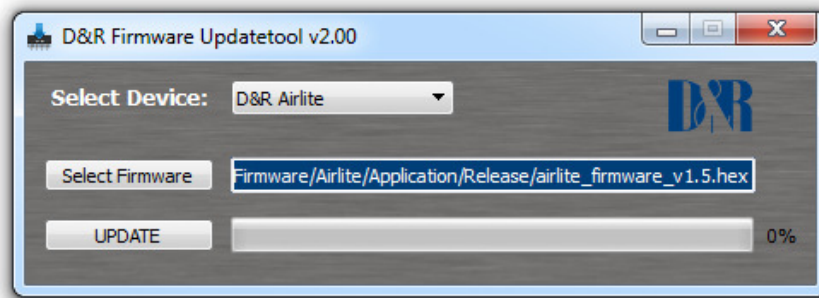


In the device manager the unknown device is correctly installed and now shown as :
Atmel USB Devices -> ATxmega128A4U

The ATxmega128A4U device indicates the Airlite is in bootloader mode.

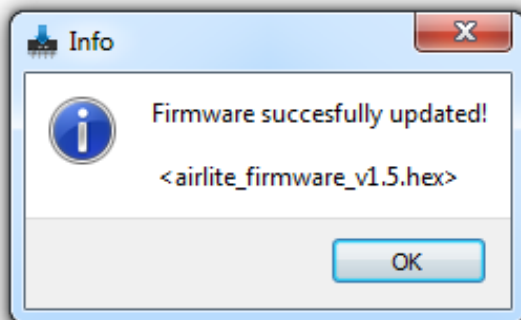


Flash firmware into device



- Startup the *D&R Firmware Updatetool* application.
- Select D&R Airlite device from the drop down menu.
- Select the firmware file (*.hex).
- Press the UPDATE button.

The progress bar gives an indication of the status of the update procedure. When the update is successfully performed the Airlite automatically leaves the bootloader mode and reboots with the new firmware in normal operation mode. The following message should appear:



Update Procedure GSM Hybrid

Preparation

Before you can start with the update procedure the following precautions must be taken:

- Connect a USB cable between the GSM Hybrid and the PC
- Download and install Firmware Updatetool: <http://www.d-r.nl/wiki/dokuwiki/doku.php?id=software>
- Download the latest firmware: <http://www.d-r.nl/wiki/dokuwiki/doku.php?id=software>
- Startup the GSM Hybrid in bootloader mode (see next chapter).

Enter Bootloader mode

To enter the bootloader mode a special startup sequence should be followed:

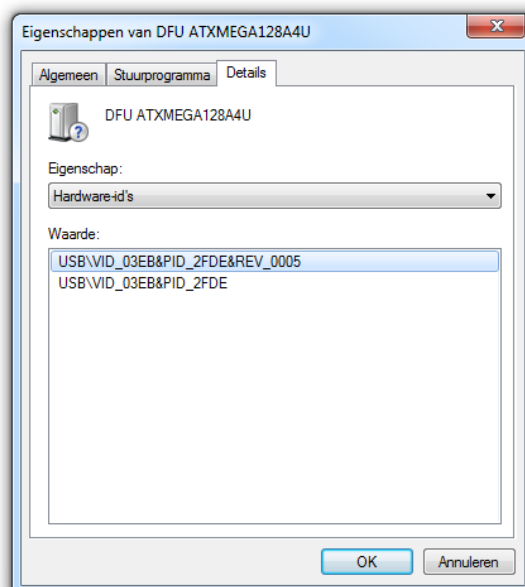
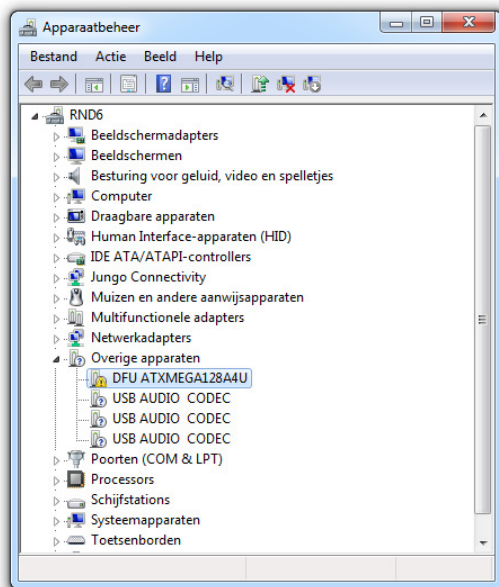
- Disconnect power
- Push and hold down the connect-switch (Ring/Hook) (located on front panel)
- Connect power
- Release the connect-switch

Install USB bootloader drivers

When the GSM Hybrid enters the bootloader mode it will probably sign up as an 'unknown device' or 'DFU ATXMEGA128A4U' in the device manager from Windows (yellow exclamation mark). To determine if this unknown device is the GSM Hybrid in bootloader mode, right-click on the device and select properties. On the *Details* tab select *Hardware-id's* from the properties selection box and verify the VID and PID of the device.

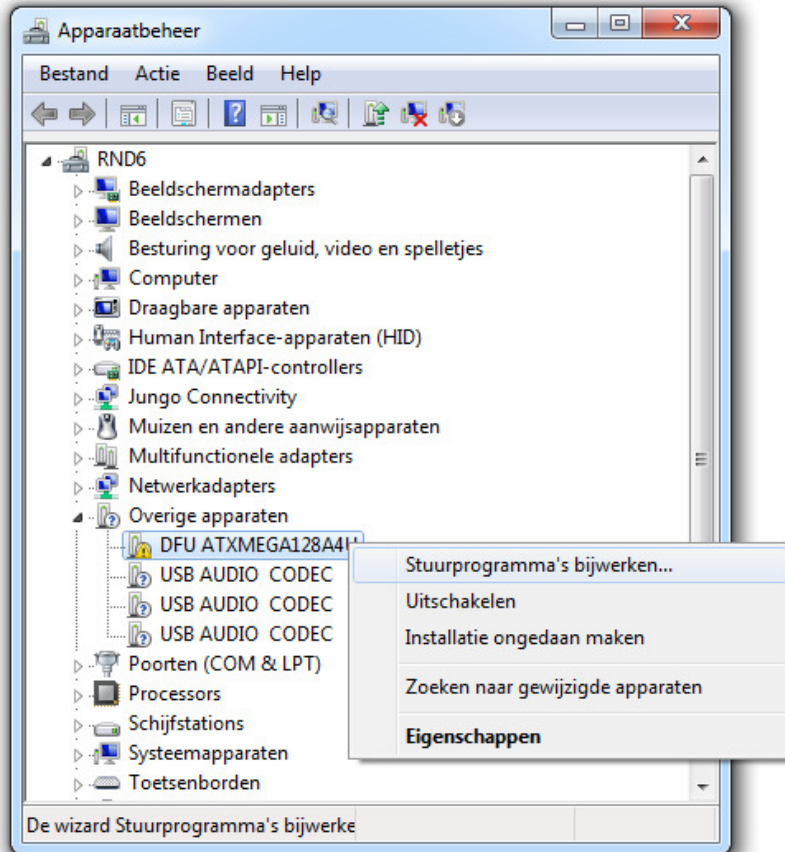
VID (Vendor ID): **03EB**

PID (Product ID): **2FE4**

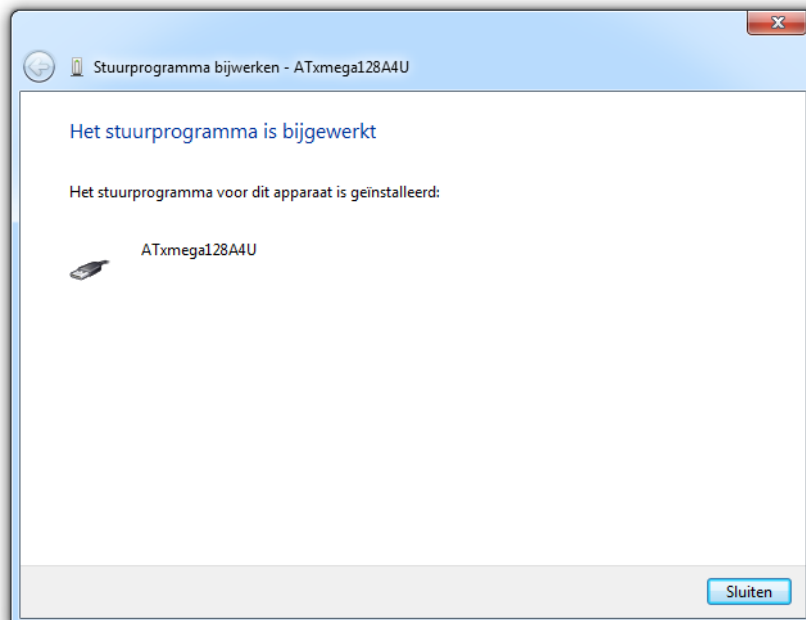


To install the drivers right-click on the device and select update drivers. The drivers can be found in a subdirectory 'usb' of the Firmware Updatetool installation folder. For example:

C:\Program Files (x86)\D&R Firmware Updatetool\usb

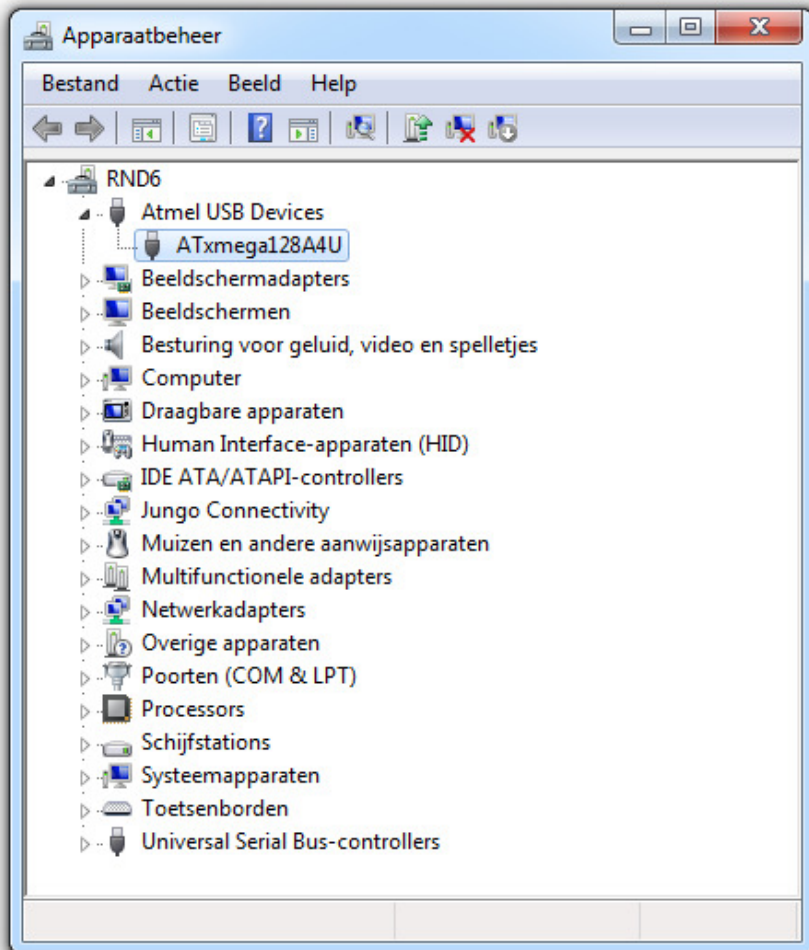


If the installation of the drivers was succesfully you should be able to see a screen similar like below:

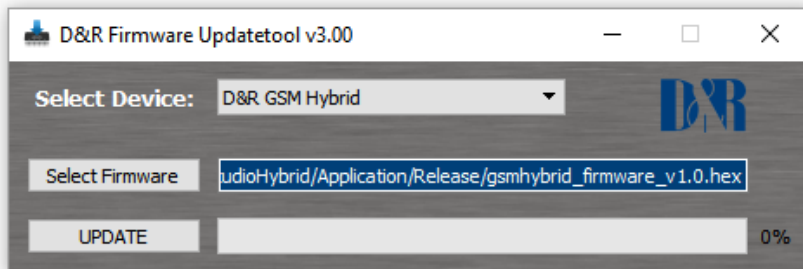


In the device manager the unknown device is correctly installed and now shown as :
Atmel USB Devices -> ATxmega128A4U

The ATxmega128A4U device indicates the GSM Hybrid is in bootloader mode.

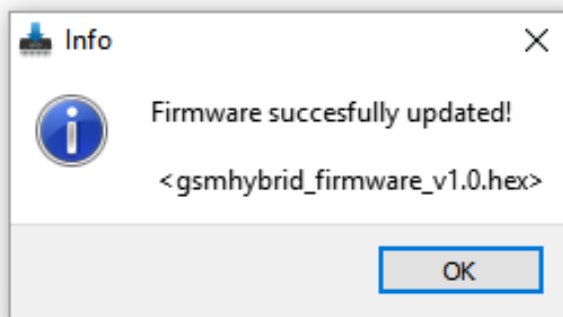


Flash firmware into device



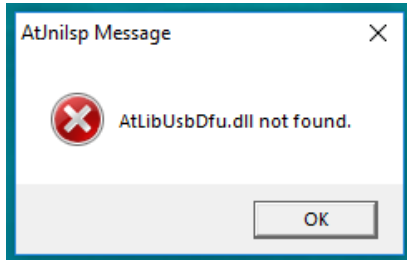
- Startup the *D&R Firmware Updatetool* application.
- Select D&R GSM Hybrid device from the drop down menu.
- Select the firmware file (*.hex).
- Press the UPDATE button.

The progress bar gives an indication of the status of the update procedure. When the update is successfully performed the GSM Hybrid automatically leaves the bootloader mode and reboots with the new firmware in normal operation mode. The following message should appear:



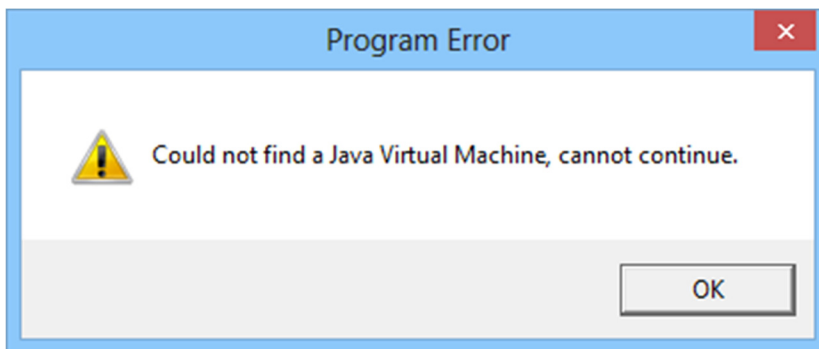
Troubleshooting

AtLibUsbDfu.dll not found



If you were prompted with the AtLibUsbDfu.dll not found error message, the USB bootloader drivers are not installed. Please see the chapter 'Install USB bootloader drivers' in this document for installing the drivers for your mixer.

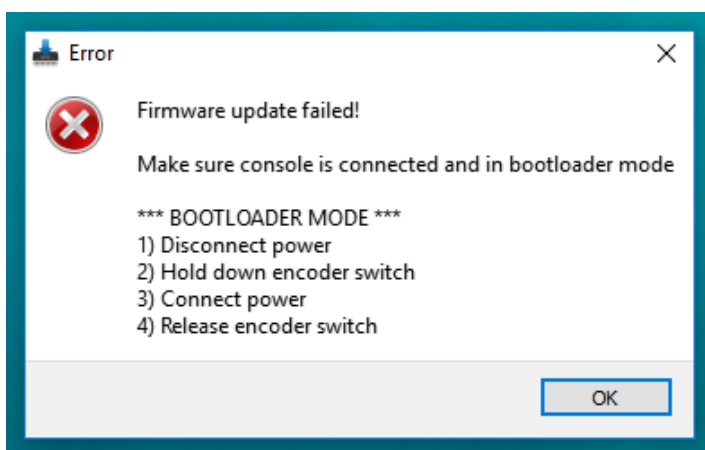
Java virtual machine (JVM)



If you were prompted with the Java Virtual Machine (JVM) error, it means JVM is not installed on your system. Java is required for the *Airence Firmware Updatetool*.

You can download it for free from: <http://java.com/>

Error – Firmware update failed!



If you were prompted with the above error while you are in the correct bootloader mode, you are probably missing some Microsoft Visual Studio drivers to let the program run correctly. Please install:

Microsoft Visual C++ 2010 Redistributable Package (x86)

DOWNLOAD LINK: <https://www.microsoft.com/en-us/download/details.aspx?id=5555>